

# Nanaimo Kennel Club

## Spring 2022 Newsletter

### NANAIMO KENNEL CLUB AND ELDERDOG – by Sandi Malcolm.

The Nanaimo Kennel Club made another wonderful donation to a local dog association this year. The donation to ElderDog of \$537.50 will go to good use for both dogs and their owners in Nanaimo. The donation amount was so unexpected and they were so grateful for it.

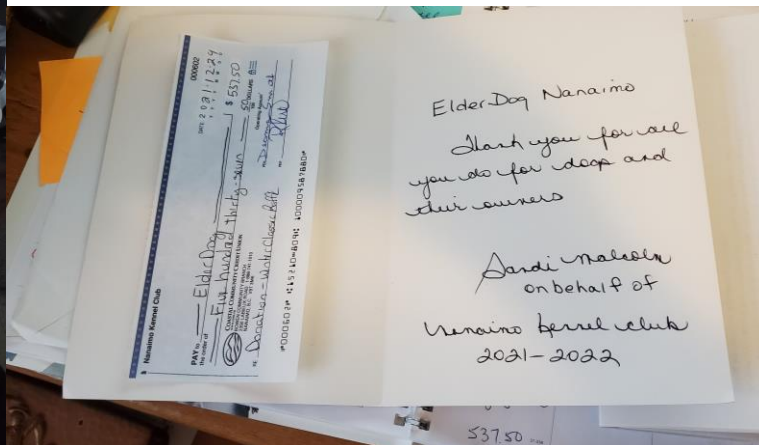
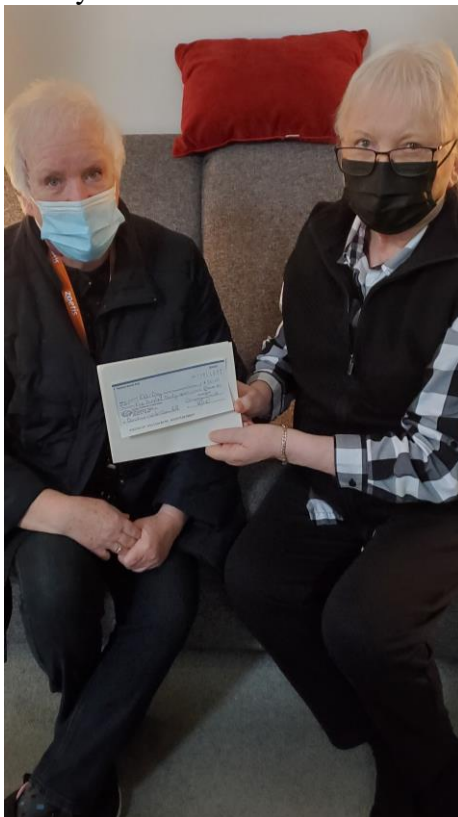
I went and delivered the cheque to the ElderDog people on January 12th. It took awhile to be able to go due to the heavy snow and no snow removal from my area or theirs.

Such a lovely couple who are so proud of what they do and the people they help. I have asked them to write something up for the newsletter.

Here are two pictures, one with the writing I put into the card with the cheque - both quite visible. The second of me giving and Linda (ElderDog) receiving the cheque.

So nice to put a face to a name and we had a wonderful conversation about what they do and how they help people and dogs. I would sure like to see the club donate to them again as these are the real deal and they make a difference.

They were so pleased to put a face to a name as well and she gasped when she saw the amount of money.



[Dogshow.ca](http://Dogshow.ca) - BC & Yukon

**DogShow.ca now handles CKC Agility trials!**

**We have officially released our new Event Secretary app, which features the ability to enter results and calculate points and Q/NQ on-site WITHOUT an internet connection!**

**DogShow.ca has your trial covered from accepting online entries, tracking live limits, running orders, scribe sheets, marked catalogues, accounting and now all the way to on-site results and point calculations. All in one easy-to-use system!**

**Choose to run the app on a phone, tablet or your PC/Mac laptop optionally connected to a printer.**

**\*\*\* Please contact us for one of our daily online system demonstrations. We are now booking into the 1st week of February. \*\*\***

**Do we support AAC as well? We are looking for AAC clubs to work with to further enhance the system to handle AAC trials.**

## **AGILITY – by Janice McCallum, Chair**

### **Changes at Run A Muck**

**Run A Muck the name for the of the property in Qualicum where we hope to hold our agility trial in 2022. We had to cancel trials the last 2 years due to Covid, but we are hoping they will go ahead this year.**

**The property is owned by Dan Steel and Tina Johnston, and they have been very busy this past fall and winter building an indoor training and trial arena. The building has been named; The Matrix and it is an 85 x 160 building with 85 x 140 ft of Agility Specific artificial turf from the Czech called JUTAGrass. It houses world class agility equipment from Spain, called Galican. The Matrix is situated on 20 acres of dog dedicated paradise with a gravel parking lot, lots of room for camping and for running off leash.**



They have also purchased a dock diving pool which has arrived, and they plan to build the dock once the ground dries up. The pool will be 21x49 feet with a 40 ft dock.  
For pictures of the property go to [Run A Muck Acres Dog Sport Centre \(agilityunleashed.ca\)](http://Run A Muck Acres Dog Sport Centre (agilityunleashed.ca))



The toy dog specialty will be held at the Nanaimo Kennel Club show in June, 2022. Be sure to come and see them.

## Toy Dogs

### Breeds

A few Toys were bred with a particular purpose in mind, such as the Brussels Griffon and Toy Manchester, which were initially designed to decimate the rodent population of stables and other afflicted abodes. Most of the others were primarily pampered lap dogs, meant mainly to look as appealing as possible and to sop up all the excess adoration available.

### Activity level

Perky, playful and cuddlesome, most of the Toy breeds are lively, upbeat characters. A few, such as

the Pekingese, can be more sedate.

### Size

This is the most uniform group when it comes to size. Think "small," from the tiniest Chihuahua barely tipping the scales at less than three kilograms (six pounds) to the solidly built Pug that should not exceed eight kilograms (18 pounds).

### Trainability

Primarily house pets, Toys tend to live very closely with their owners and most are eager to please them. The majority of Toy breeds readily take to training, if you don't mind bending over a lot.

### Characteristics

Charming characters concocted to capture hearts, Toys can worm their way into your affections as well as your bed.

CKC recognized Toy breeds are – Affenpincher, Brussels Griffon, Cavalier King Charles Spaniel, Chihuahua Long Coat, Chihuahua Short Coat, Chinese Crested, Coton de Tulear, English Toy Spaniel, Havanese, Italian Greyhound, Japanese Chin, Maltese, Miniature Pinscher, Papillon, Pekinese, Pomeranian, Pug, Russkiy Toy, Silky Terrier, Toy American Eskimo Dog, Toy Fox Terrier, Toy Manchester Terrier, Toy Poodle, Xoloitzcuntli (Xolo), Yorkshire Terrier

## RUFF RESCUE GEAR FOR DOGS

<https://www.ruffrescuegear.com/?fbclid=IwAR2x99HoyLQFY59Z2b0dYrEcDsC8prcioATr07xt>

### A FUN TIME AT ISLAND WEST SCHIPPERKE

On Christmas day a wonderful female name Thirteen whelped 3 gorgeous fat healthy boys from our Male Ch Doreve's Island West Paladin who is the **#1 top schipperke in Canada**. He is co-owned by myself and Shannalee Pauli.

There may be show puppies available, contact me Sharon Medord if you are interested. There are several different options to do this available and I would be happy to talk to you about them.

Some brags on my wonderful schipperkes.

#1 - Enbtides Island West of Sunrise completed her show championship. Thankyou Shannalee for showing her to her championship.

January 29, 2022 - 3 schipperkes bred by Island West, Journey, Tessie, and Daisy passed their Herding Instinct test. All the schipperkes showed strong herding and driving instincts and showed that they are totally fearless little dogs.

At one point a dog broke free and came into the ring where my Tessie was herding the sheep. At that point Tessie stood her ground placing herself between the strange dog and the sheep with warning growls and blocking the dog, keeping the enthusiastic young dog away from the sheep she had been herding.

This made me realize that she really had taken on two jobs. The job of herding the sheep AND flock protector as well. I was very proud of you, my little Tessie girl.



Thanks to Michael Chesney, Southern DrawAll for the summertime picture.

Summer is just a few months away.

**Dr. Karen Becker - 2022-02-13**

### ARE LAUNDRY CHEMICALS AFFECTING YOUR PETS' SKIN & HEALTH?

If you wash your pet blankets and beds using popular fabric softeners and dryer sheets, that "just washed" fresh smell comes from chemicals called Volatile Organic Compounds (VOCs) that can negatively impact your pets' health (coughing, rashy, itchy pets, anyone?).

**Dr. Anne Steinmann's UW-Seattle research team found more than 25 VOCs emitted from dryer vents using these products, including well-known respiratory irritants like Acetone, Formaldehyde, Acetaldehyde, but also Pentane (which causes skin rashes and upset stomach), Ethyl Acetate (on the EPA's Hazardous Waste list; causes anemia, changes in white blood cells and can damage the liver and kidneys), Benzyl Acetate (can be absorbed through the skin and is linked to pancreas problems) and Alpha-terpineol (causes headaches and nervous system disorders).**

**Our pets can do without having to breathe in these chemical residues or having to lay on them, so here's our Forever Dog Tip of the day: replace chemical-laden fabric softeners with a non-toxic DIY option!**

**Recipe: Mix 6 cups white vinegar with 1 cup baking soda, let it fizz. When the fizz stops, pour mixture into a large glass container with a lid. Use 1 cup per load of laundry.**

**We highlight all of the of home chemical risks that can negatively impact your dog's health in the The Forever Dog book, available now for pre-order by clicking here:**

**<https://foreverdog.com/about/#order-window>**

**I don't normally brag about my expensive trips, but I just got home from the vet.**

## **SHARON MEDFORTH, ORIGINAL PAINTINGS FOR SALE**

**4 original acrylic paintings on canvas for sale .**

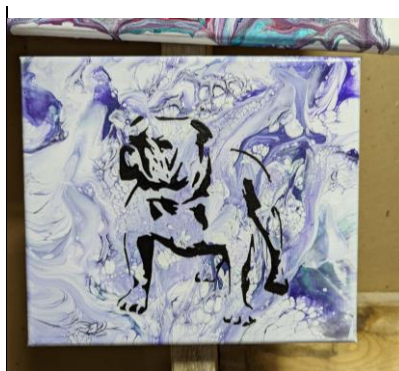
**Boarder collie 7" by 7" original on canvas \$35.00**

**Bulldog 9" by 7" on original canvas \$35.00**

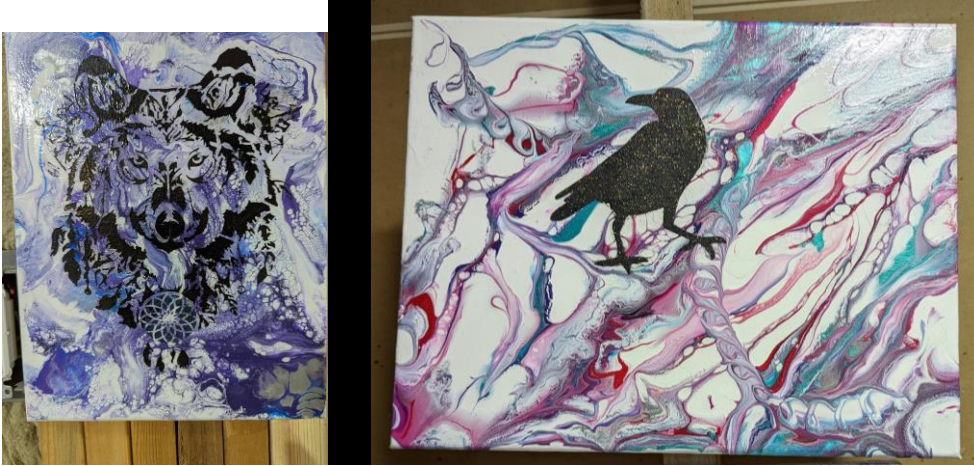
**Raven about 11" by 14" original on canvas \$40 dollars**

**Husky picture 9" by 11" original on canvas \$35**

**Contact Sharon Medforth by phone or text 250-667-3878**







## **Dog Harnesses: The good, the bad and the ugly**

A “no-pull” harness may be an effective way to prevent your dog from pulling too much on the leash, however they can lead to some problems. These harnesses restrict proper shoulder movement, and by doing so limit the amount of pulling, but also negatively affect their normal gait patterns. These harnesses sit on top of some very important muscles, the biceps, brachiocephalicus and the supraspinatus, which help to extend the shoulder joint. This compression and lack of appropriate motion of the shoulder can lead to shoulder pain, arthritis, inflammation and bursitis.

Dogs carry 60% of their weight on their front limbs and 40% on their hind limbs. In dogs who wear harnesses, studies have shown that they begin to shift their weight to the hind end so that they do not have as much pressure on the front. This finding tells us that the discomfort they experience in a harness is enough for them to alter their gait and posture.

If your dog pulls a lot and your concern is injury to the neck, then a harness for training purposes may be the best option for your pet. It is important to fit the harness properly and ensure your dog is able to move their shoulder through his/hers full range of motion. Although most “no-pull” harnesses are designed to restrict shoulder movement, there are some harnesses that have been designed to allow proper movement through the shoulder. Check out your local pet stores for harnesses that fit better and allow for movement. One

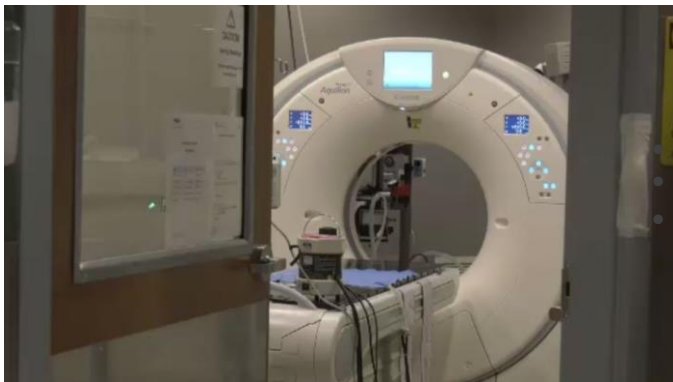


that is recommended is called the “Haqihana harness”. This harness is specifically designed to allow for full flexion and extension of the shoulder joint so that no movements are restricted. The club in NO way endorses this brand or any harness brands, it is simply offered as a suggestion and the appropriateness of a harness is for owners to decide.

Image from haqihana.com

**When deciding what kind of leash or harness is right for your dog, please consider how they move in it and determine if they are restricted in any way. The best solution for excessive pulling is training. If you are unsure if your dog’s harness is fit properly, have it checked by an expert.**

B.C.'s first pet radiation oncology facility open on Vancouver Island



The VCA Central Victoria Veterinary Hospital is pictured on Feb. 14, 2022 (CTV News)

CTV News Vancouver Island  
Staff

Follow | [Contact](#)

Published Feb. 14, 2022 4:46 p.m. PST  
Staff at a Saanich, B.C. veterinary hospital say people are crossing borders to its newly built site to access a cancer clinic for pets, marking a first for British

Columbia.

VCA Central Victoria Veterinary Hospital is home to the province's only radiation oncology facility for pets and will become the first to have a surgical oncologist by the summer.

Since the veterinary hospital's expanded space opened on Roderick Street in September 2021, the facility's specialty medical director says the team has helped more than 100 animals through their cancer diagnoses.

"It really is about giving [pets] the treatment that they need to live to the best of their abilities for as long as they can," said Dr. Genevieve Hammond.

**GENERAL NEWSLETTER INFORMATION – If you would like to share your story on how you got into dogs, breeding or competing at whatever you compete in, please share it with us in the newsletter.**